

Log Max

HEADS ABOVE THE COMPETITION

ORIX SIMULATIONS



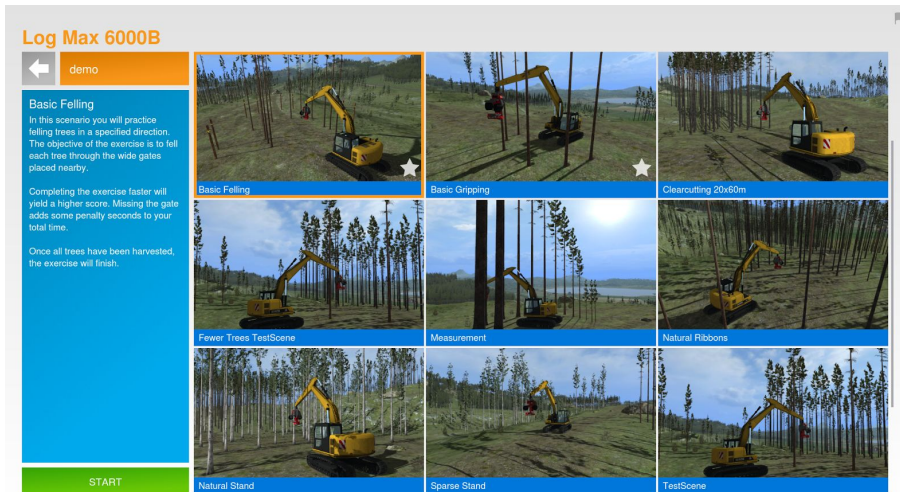
TRAINING SIMULATOR

LOG MAX OFFERS VIRTUAL SIMULATOR TRAINING IN A LOW-STRESS ENVIRONMENT FOR TRAINERS AND TRAINEES, MORE IMPORTANTLY, SIMULATORS REDUCE IMPACT ON PRODUCTIVITY BY NOT USING ACTUAL MACHINES ON-SITE.

TRAINING SCENARIOS

Each scenario is either a specified exercise with a clear goal, or an unrestricted scenario where the goals are less defined.

Detailed information about the results is available in the statistics and by looking at the end-result screenshots in the Simulator Management System.



BASIC GRIPPING

In this scenario you will practice control of the crane and harvester head. The objective of the exercise is to position the harvester head and grasp the tree at the height indicated by a semi-transparent cylinder



ADVANCED GRIPPING

In this scenario you will practice more advanced control of the crane and harvester head. The objective of the exercise is to position the harvester head and grasp the tree at the height and orientation indicated by a semi-transparent harvester head. Once a correct grip is held the target will move to another tree.



BASIC FELLING

In this scenario you will practice felling trees in a specified direction. The objective of the exercise is to fell each tree through the wide gates placed nearby. Once all trees have been harvested, the exercise will finish.



ADVANCED FELLING

In this scenario you will further practice felling trees in a specified direction. The objective of the exercise is to fell each tree through the narrow gates placed nearby. Once all trees have been harvested, the exercise will finish.



CLEAR-CUTTING 20X60 METERS

In this unrestricted scenario you start next to a grove, with a density suitable for clearcutting. The rectangular grove is 20 meters wide and 60 meters deep (65 x 200 ft). The width of the grove forces the driver to decide if he should drive along a straight line and use the crane at full length, or position the vehicle in favor of working with a less extended crane.



SPARSE STAND

In this unrestricted scenario you start next to sparsely populated areas of birch, pine or spruce. The area is generally flat and easy to navigate. Any felling of trees marked with ribbons is tracked, allowing for a different exercise if they're taken into consideration.



NATURAL STAND

In this unrestricted scenario you start next to a more naturally mixed forest, with a varying occurrence of each species. The terrain is more varied and must be taken into consideration.



NATURAL RIBBONS

In this unrestricted scenario you start next to a marked patch of mixed forest, dominated by pine. The area is outlined by trees marked with ribbons. Any felling of trees marked with ribbons is tracked, allowing for an exercise where they're taken into consideration.



THINNING

In this unrestricted scenario you start next to a dense grove, suitable for thinning. The rectangular grove is 18 meters wide and 40 meters deep (60 x 130 ft). It should be possible to reach most trees to the left and right of the machine if the machine drives down the middle. The density at start is around 1900 trees/ ha. A typical goal of this exercise is to remove approximately a third of the trees present.

AVAILABLE SETUPS

The Log Max simulator is available in two setups, a desk mounted version or a fully integrated system.

The desktop version is delivered with adjustable desk clamps and a rugged carry case.

The integrated version features an industry standard seat. The controls are mounted to adjustable arm rests for a comfortable position in front of a 40 inch curved lcd display.



HANDLING

Simulator is for indoor use only.

Keep Simulator away from direct sunlight and moisture. Do not use Simulator in dusty environments.



WWW.LOGMAX.COM
